

33 Windmill Court

Alton, Hampshire, GU34 1EQ

Price £100,000

wpr



33 Windmill Court,
Alton, Hampshire, GU34 1EQ

Price £100,000 Leasehold

- Alton train station 0.8 mile
- Sainsburys 0.2 mile
- Alton High Street 0.3 mile
- Farnham within 9.6 miles

A well presented 1 bedroom first floor retirement maisonette with views across Alton

- Living/dining room
- Kitchen
- Double bedroom
- Kitchen
- Bathroom
- Communal grounds
- Emergency pull cords
- Loft space
- Economy 7 heating & hot water

DESCRIPTION

Quietly positioned bordering Alton's town centre, this completely self contained retirement apartment is accessed via its own front door. A condition of purchase is that residents are aged 60 years or older. Set in beautifully maintained communal grounds the property has far reaching views, a 24 hour emergency call button system in all rooms, a house manager, and parking for visitors and residents.



LOCATION

Set at the end of a no-through road, St. Mary's Close, and alongside the Watercress steam railway line, attractively landscaped Windmill Court lies directly to the south of Alton town centre with Sainsbury's in-town store approached on foot via Mount Pleasant Road, Maltings Close and Turk Street. In 2016, the scheme won Silver in the Alton in Bloom competition. There are family and major shops, M&S, Boots and Iceland stores, a library, restaurants, hotels and inns, a museum and gallery, and a variety of associations. Alton also has park-like public gardens with a bowls club and seasonal programme of events, weekly street and farmers market events, a station (Waterloo line), further stores such as Waitrose and Aldi, a sports centre, two golf courses and footpaths.

DIRECTIONS

Travelling from Alton's High Street turn into Turk Street and proceeding along the road toward Windmill Hill take your second right into St Mary's Close where the property will be found at the far end.

COUNCIL TAX

Band A - East Hampshire District Council

SERVICES

Mains water, electricity and drainage.

TENURE

Leasehold - Please apply for service charges & lease details.



78 High Street, Alton, Hampshire, GU34 1EN
t: 01420 87379 e: alton@wpr.co.uk

VIEWING

Strictly by prior appointment with Warren Powell-Richards



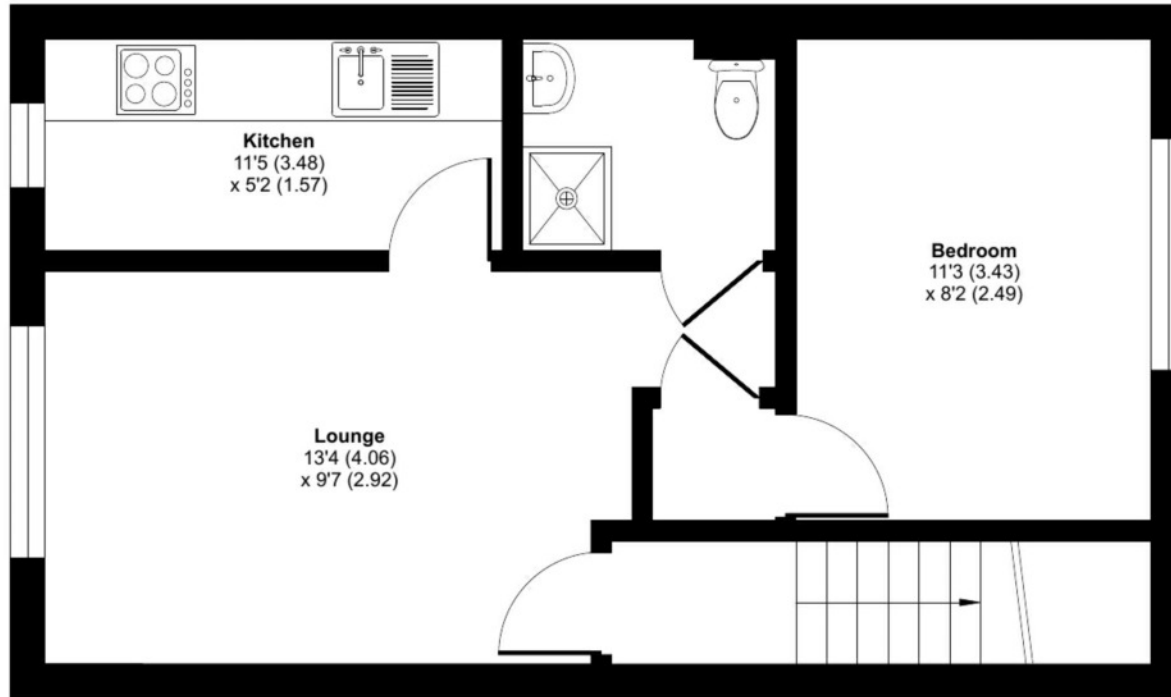
Windmill Court, St. Marys Close, Alton, GU34

Approximate Area = 412 sq ft / 38.2 sq m

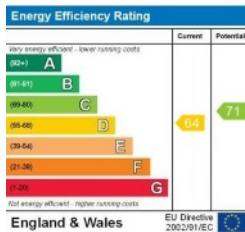
Outbuilding = 8 sq ft / 0.7 sq m

Total = 420 sq ft / 39 sq m

For identification only - Not to scale



FIRST FLOOR



Floor plan produced in accordance with RICS Property Measurement Standards incorporating International Property Measurement Standards (IPMS2 Residential). © n1cheom 2023. Produced for Warren Powell-Richards. REF: 980237

Office Locations: Alton • Farnham • Godalming • Grayshott • Haslemere • London

Property details are a general outline and do not constitute any part of an offer or contract. Services, equipment, fittings or central heating systems have not been tested and no warranty is given or implied that these are in working order. Buyers are advised to obtain verification from their solicitor or surveyor. Fittings and fixtures are not included unless specifically described. Measurements, distances and areas are approximate and for guidance only. This material is protected by laws of copyright.